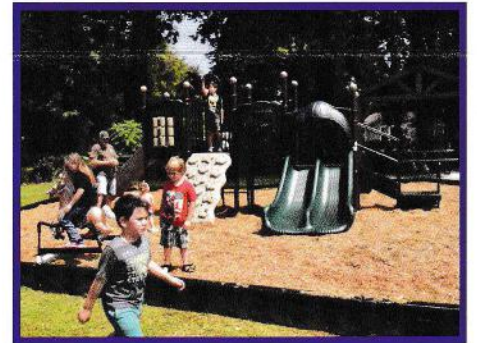
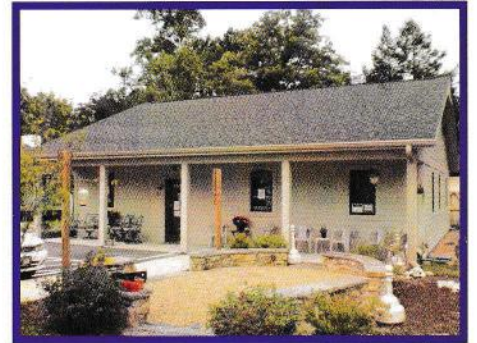


The Haven of Transylvania County Impact Report 2024



hope

Mission: To bridge the gap between homelessness and permanent housing for both families and individuals. We are dedicated to providing a safe, transitional shelter, along with essential services, to empower those in need and pave the way toward lasting independence.

Vision: To eliminate homelessness in our county and surrounding areas, creating lasting change - one guest at a time.

Annual Letter

Dear Friends and Partners,

Because of your unwavering generosity, 2024 was a year of remarkable progress. Your support allowed us to expand our facilities, strengthen our programs, and deepen the impact of our services—laying a strong foundation as we step into 2025 with hope and momentum.

Our mission is to **bridge the gap between homelessness and permanent housing**. This past year, 85% of our guests took that life-changing step forward, finding stability from our safe, transitional shelter and comprehensive support services. With your help, they didn't just find housing—they found hope!

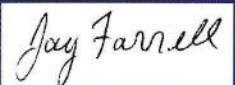
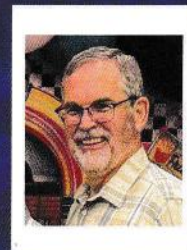
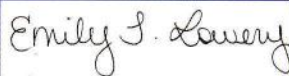
Guided by our values of **CARE FIRST**, we focus on dignity, respect, and compassion in every interaction. Our team, volunteers, and community partners have worked tirelessly to meet both immediate needs and long-term challenges—addressing the root causes of homelessness and helping our guests reclaim their futures.

Every warm bed, every job secured, every life transformed this year is a testament to your belief in our work. **TOGETHER, we are creating a community where everyone has a place to call home—and the chance to thrive.**

With deep gratitude,

Emily Lowery

Jay Farrell



Homelessness Continues to Rise

Homelessness in Transylvania County continues to rise with escalating rental prices a major contributing factor.

Based on the point in time count in January 2024, Transylvania County experienced a nearly 30% increase in homelessness, with 77 individuals counted as homeless, up from 59 the previous year. This surge includes a troubling number of women and children.

Rental prices in Brevard have been climbing steadily. As of April 2025, the average rent for all property types is approximately \$1,950 per month, approximately 8% higher than the national average.

The demand for affordable housing and support services continues to outpace availability. Addressing this issue will require a concerted effort from local government, community organizations, and residents to develop and implement sustainable solutions.

In the meantime, The Haven will continue to offer shelter and support services to all those in need.

How The Haven Helps

The Haven consists of two facilities:

- Thomas House, an 18-bed shelter for single adults, which features an open floor plan.
- Family House, a secure residence for families with children which features four private bedrooms that preserve family unity. It also includes a commercial playground.

Both shelters are thoughtfully equipped with laundry facilities, showers, mail services, and telephone messaging systems, creating a warm, dignified, and inviting environment for our guests. Our dedicated staff assists guests in identifying the factors leading to their current situation and developing actionable steps toward stable, affordable housing. Through personalized housing stabilization plans, employment support, and financial education, guests are empowered to rebuild their lives.

We also provide mental health counseling to address challenges like depression, anxiety, past trauma, or grief, common barriers for those experiencing homelessness.

Conveniently located near community resources like Sharing House and Bread of Life, we collaborate with many local agencies to provide comprehensive support for individuals and families in need.



2024 Accomplishments

Expanded Facilities - In 2024, we added 800 square feet to our shelter, creating additional offices and meeting rooms. This expansion allows us to better serve our guests in a private and comfortable setting.

Strengthened Mental Health Counseling - We took a significant step forward in supporting our guests by enhancing our mental health counseling services. Guests are now able to meet with a trained clinician on site as frequently as needed, fostering emotional well-being and recovery.

Enhanced Garden - Our garden continues to flourish! We expanded to include raised beds for growing vegetables and herbs, enabling us to provide fresh, homegrown produce. With dedicated spaces for children to engage in hands-on learning and gardening activities, the garden is ready for any level of experience and ages.

Held in High Regard by the Community - We're proud to celebrate being awarded a perfect 100 score and a four-star rating by Charity Navigator. This recognition underscores our commitment to transparency, accountability, and impactful service.

Initiated Strategic Planning - Looking toward to the future, we initiated the development of a comprehensive long-term strategic plan. This process has helped us identify key areas for future growth and enhancement to better serve our community.



Looking Ahead to 2025 and Beyond

Expand Shelter Services - Look for ways to better utilize and diversify capacity which includes both a dedicated women's shelter and more space for families.

Strengthen Collaboration - Continue to partner with local organizations and community coalitions to help create solutions to combat homelessness and increase affordable housing.

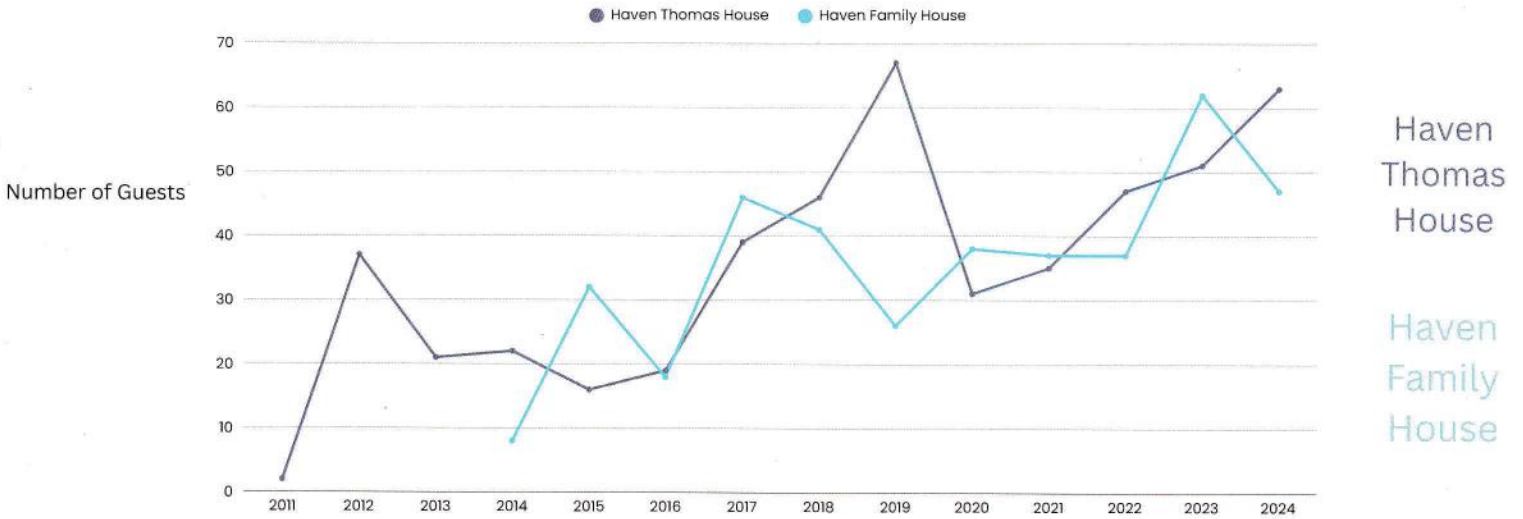
Enhance Advocacy Initiatives - Raise awareness about the causes of homelessness and dispel common myths to foster compassion and understanding. Support affordable housing, mental health services, and living wage initiatives at the local, state, and national levels.

Focus on Long-Term Housing Solutions - Develop programs that combine housing with wraparound support services, such as counseling and job placement. Work with developers and policymakers to create more low-cost housing options.

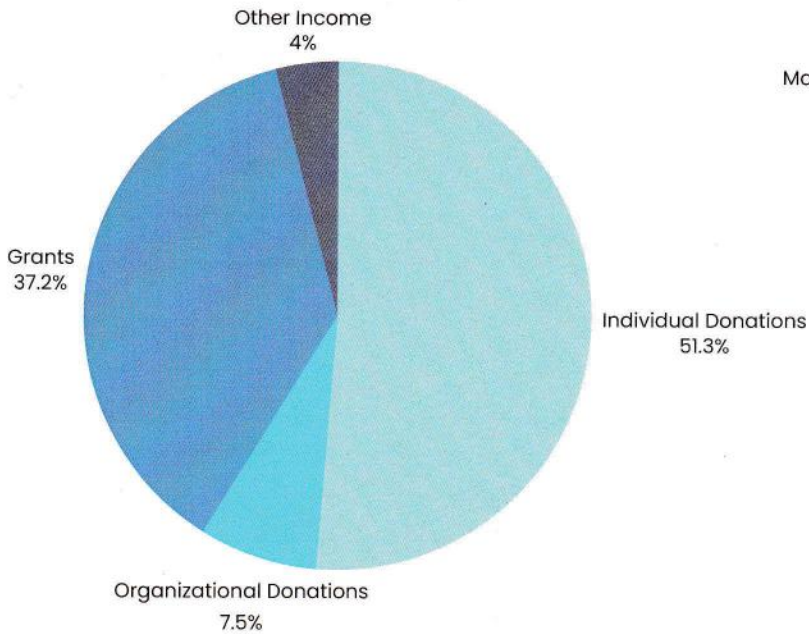
Empower Those with Lived Experience - Engage individuals who have experienced homelessness in the planning and implementation of programs. Develop peer support networks and provide educational programs to help guests navigate the path to independence.

By The Numbers

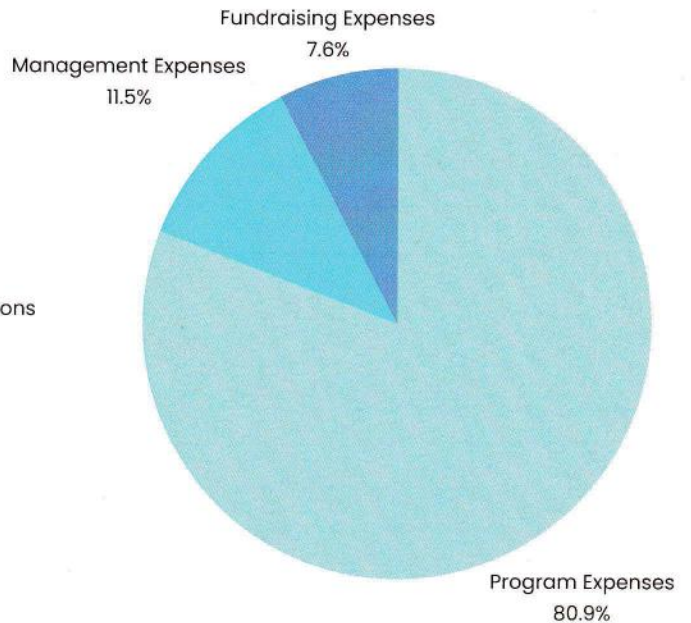
Since 2011, The Haven has provided shelter for almost 900 people, including 224 children.



\$560,882 - Revenue



\$399,943 Expenses



Your continued generosity will help us expand both capacity and services in the future.

Be the Difference in the Year Ahead

This report highlights the impact you have made possible.

Every day, more individuals and families in our community face the uncertainty of homelessness. With your continued support, we can say yes to more of them. Yes to shelter. Yes to hope. Yes to home.

Your gift today can change the story for someone tomorrow.


Please consider making a donation to help us continue this vital work.

Together, we can create lasting change—one guest at a time.

 828.877.2040

 Office@HavenofTC.org

 P.O. Box 25
Brevard, NC

 HavenTC.org



With a perfect score of 100



Scan here to donate!



THANK YOU

To our 16 grantors, 41 organizations, 354 individual donors, and 40 volunteers, please know that none of this would be possible without your support.

Special Thank You to our Grantors:

Emergency Solutions Grant
Community Foundation of WNC
Community Foundation of HC
Church of Good Shepherd
Dogwood Health Trust
First United Methodist Church
Lake Toxaway Charities
Lovett Foundation



Lutheran Church of the Good Shepherd
Pisgah Forest Rotary
St. Philips
Women of St. Philips
Sam's Club
Sisters of Mercy
United Way
Walmart Pisgah Forest

Haven Staff

Executive Staff:

Executive Director - Emily Lowery
Assistant Director - Teresa Adkins
Case Manager - Sasha Díaz

Shelter Assistants:

Patricia Carnley
Lisa Palumbo
Greg McCall

Mental Health Clinician:

Emilee Landreth LCSW-A

Board of Directors

Officers:

Board President - Jay Farrell
Vice President - Richard Zollinger
Secretary - Nancy Watts
Treasurer - Debbie Dove

Directors:

Alan Assner
Jill Beach
Dick Benson
Desmond Duncker
Elly Leidner
Colin Pelton
Lisa Presnell
Craig Zimring

Haven Staff and Board includes people with lived experience

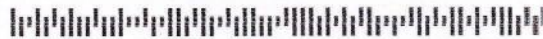




The Haven

P. O. Box 25
Brevard, NC 28712

Nonprofit Org
US Postage
PAID
Permit 42
28739



hope

Guest Testimonials

"I am happy where I am now in my own place because The Haven helped me"

"Y'all helped me so much"

"If I knew it was like this, I would have came a long time ago and not stayed on the street"

"I am thankful The Haven was here for me"

"Good place to be"

"I don't know if I would still be alive if it wasn't for you"